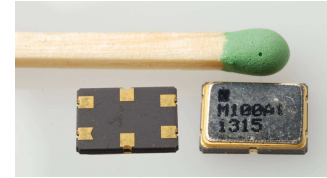
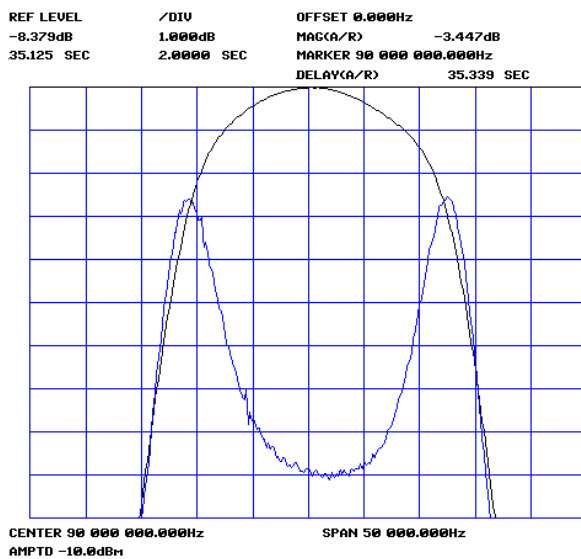


KVG Quartz Crystal Technology announces the availability of a new ceramic packaged SMD crystal filter series

KVG proudly present new 2- and 4-pole crystal filters with center frequencies between 21.40 MHz and 140.00 MHz packaged within a small SMD case of only 7 mm x 5 mm. The insertion loss is less than 3 dB and stopband attenuation up to 50 dB is achieved. The shape factor varies between 2.2 and 5.5 mainly depending on the number of poles.



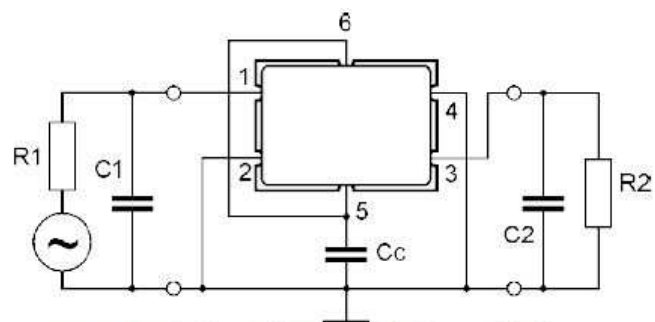
Examples of our product range							
Type	Frequency	Passband		Stopband		Shape-factor	POLE
	MHz	dB	± kHz	dB	± kHz		
XF-214M15	21.40	3	15	40	50	3.3	4
XF-352M11	35.25	3	11	50	60	5.5	4
XF-700M10	70.05	3	10	20	25	2.5	4
XF-900M10	90.00	3	10	19	25	2.5	4
XFM-1000S01-LF	100.00	3	4.5	15	20	4.4	2



Frequency-plot and group-delay curve for a filter
 $F_c = 90.00$ MHz; $BW @ 3.0$ dB = ± 10.0 kHz

The package is hermetically sealed and RoHS compliant for lead-free reflow soldering. KVG can guarantee a very good shock and vibration hardness for application in wireless communication systems and measurement equipment.

The 4-pole filters require an external coupling capacitor C_c to interconnect the two filter sections of the device.



C_c : External coupling capacitor is required

Please feel free to contact our Sales Team or our Product Managers for further details and any custom specific solution. They will offer you a suitable solution for your application.



ROHS-Compliant Product

Monolith-Filters ceramic SMD

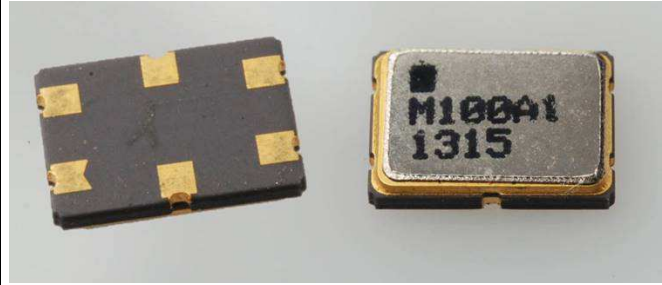


Description:

- 4-pole filters
- SMD ceramic package 7 x 5 mm

APPLICATIONS:

- wireless communication systems,
- measurement equipment



FEATURES:

- high attenuation in the stop band
- ceramic hermetic sealed by seam welding
- reflow solderable
- RoHS, PB-free
- very good shock and vibration resistance
- external coupling capacitor is required

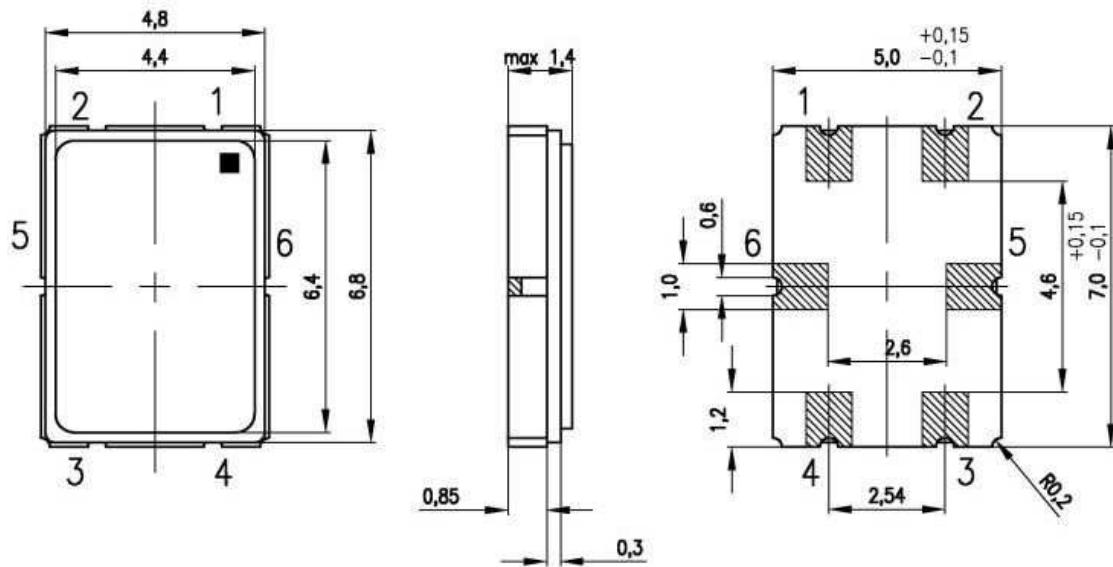
Examples of our product range

Type	Frequency	Case Style	Passband		Stopband		Termination in/out	POLE	Insertion loss max.
	MHz		dB	± kHz	dB	± kHz	(Ω)		dB
XF-214M15	21,40	BF208-1.4	3	15	40	50	4250// -1.5pf	4	2,5
XFM-214S177-LF	21,40	BF208-1.4	3	20	40	67,5	4000// -0,3pf	4	4.0
XF-255M05	25,50	BF208-1.4	3	5	40	27	1000// 3.0pf	4	3,5
XF-352M11	35,25	BF208-1.4	3	11	50	60	2400// 0.1pf	4	4.0
XF-352M20	35,25	BF208-1.4	3	20	50	90	4200// -0.6 pf	4	4.0
XFM-450S02-LF	45,00	BF208-1.4	3	10	30	25	950 // 1.8 pf	4	3.0
XF-644M075	64,455	BF208-1.4	3	7.5	40	40	350 // 3.5 pf	4	6.0
XF-700M25	70,00	BF208-1.4	3	25	20	60	1500// 0.4pf	4	3.0
XF-700M10	70,05	BF208-1.4	3	10	20	25	800 // 1.0 pf	4	4,5
XFM-700S02-LF	70,10	BF208-1.4	3	4,5	15	20	2200// -0.6pf	2	3.0
XFM-700S03-LF	70,10	BF208-1.4	3	10	15	35	500// 2pf	2	3.0
XFM-1000S01-LF	100,00	BF208-1.4	3	4,5	15	20	800// 0.65pf	2	3.0
XF-1000M12	100,00	BF208-1.4	3	12	10	27	350 // 2.0 pf	4	4,5
XFM-1000S02-LF	100,00	BF208-1.4	3	12	40	65	350	4	4.5

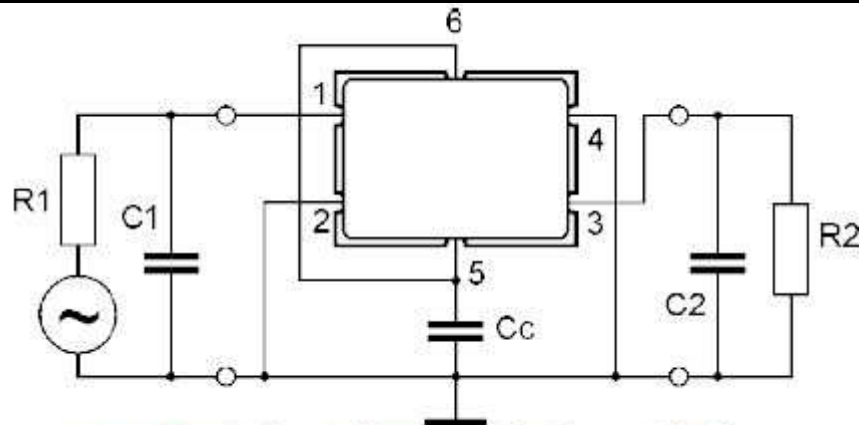
KVG Quartz Crystal Technology GMBH

D-74922 Neckarbischofsheim P.O.B. 61 74924 Neckarbischofsheim Waibstadter Strasse 2 - 4
Tel: +49 (0) 7263 / 648 - 0 Fax: +49 (0) 7263 / 6196 e-mail: info@kvg-gmbh.de

Case Style BF-208-14



Test-Circuit / Pinning:



Cc: External coupling capacitor is required