

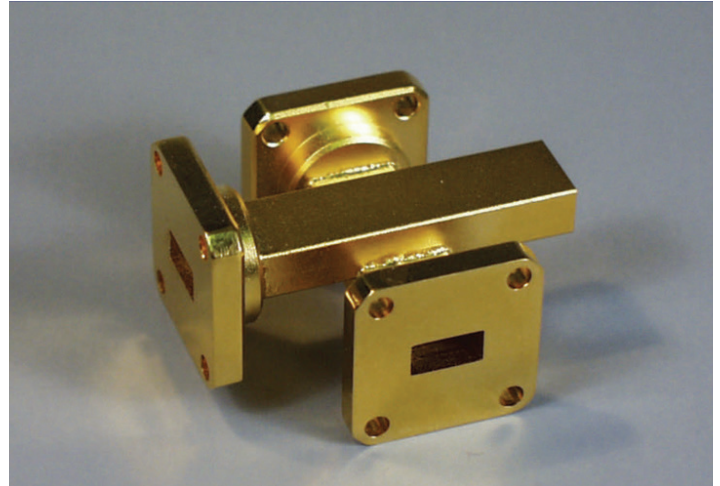
Description

Mi-Wave's 566 Series Cross Guide Coupler Consists of two waveguides at right angles to each other, joined by small coupling slots whose size, location, and orientation determine the coupling and directivity of the unit. All ports are available for sampling or injecting energy and are clearly marked to indicate the coupling direction.

- Low Cost
- Low VSWR
- Four-port Device
- Rugged Construction
- Broadband Operation

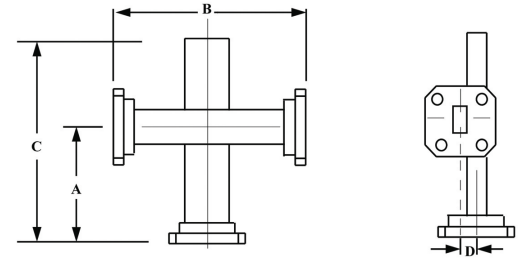
Applications

The 566 Series Cross Guide Directional Couplers provide an efficient means for sampling power or injecting a signal into a waveguide transmission line.



Dimensional Specifications

Model No.	A		B		C		D	
	in.	mm	in.	mm	in.	mm	in.	mm
566K	1.00	25.4	2.00	50.8	2.00	50.8	.187	4.74
566A	.75	.19	1.50	38.1	1.50	38.1	.161	4.09
566B	.75	.19	1.50	38.1	1.50	38.1	.127	3.22
566U	.75	.19	1.50	38.1	1.50	38.1	.11	2.80
566V	.75	.19	1.50	38.1	1.50	38.1	.090	2.29



OTHER WAVEGUIDE BANDS AVAILABLE:

WR-90 WR-51
WR-75 WR-34
WR-62

Technical Specifications (typical)

Model No.	566K	566A	566B	566U	566V
Frequency Band (GHz)	18.0–26.5	26.5–40.0	33.0–50.0	40.0–60.0	50.0–75.0
Standard Coupling Values (dB) Nom.	20, 30, 40, 50				
Directivity (dB) Typical	15	15	15	15	15
VSWR Max.	1.15	1.15	1.15	1.15	1.20
Weight (oz)	3.0	3.0	3.0	3.0	2.0

1. Any coupling values area available upon request
2. Nominal ± 2.0 dB coupling variation cover over the waveguide band when set for coupling value at the band center.

Ordering Information

