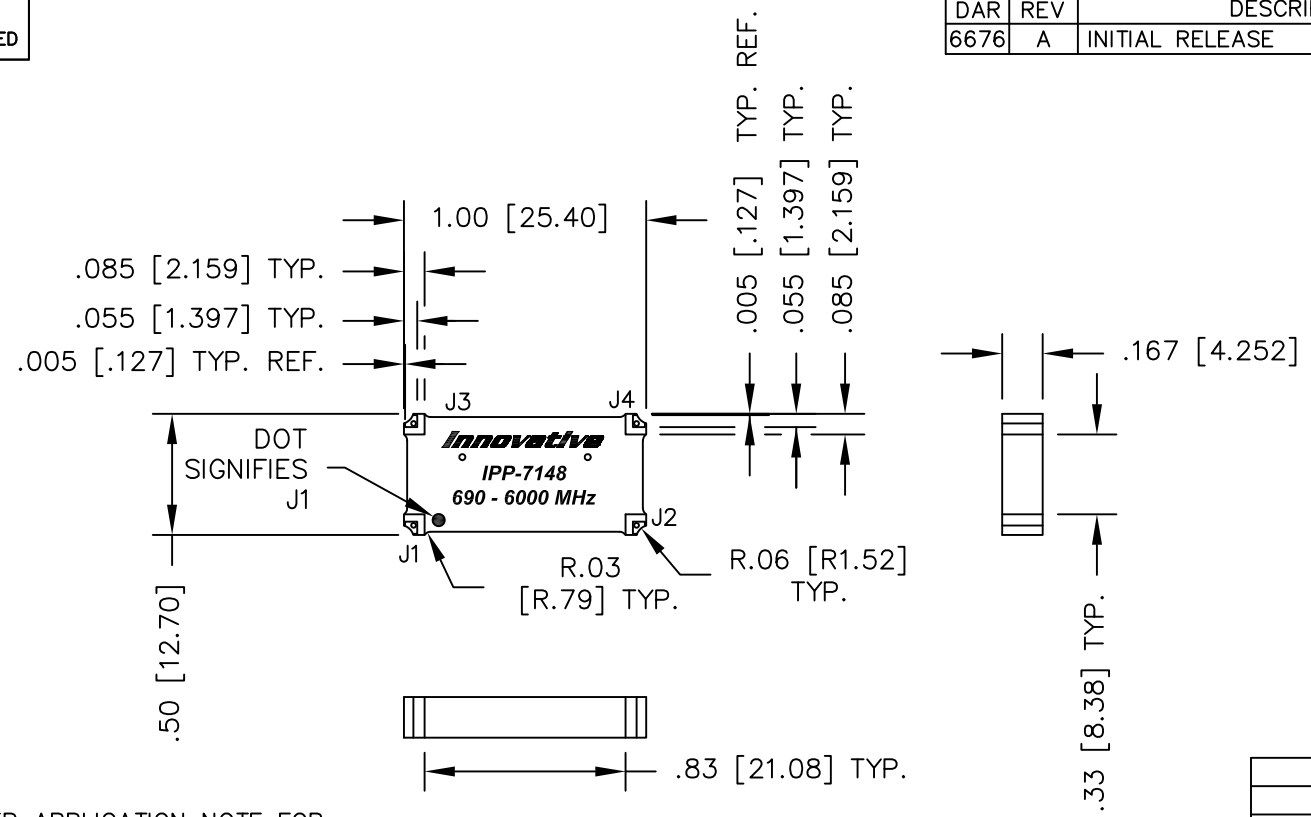


UNAUTHORIZED USE OF THIS  
DRAWING IS STRICTLY PROHIBITED

DAR	REV	DESCRIPTION	APPVD	DATE
6676	A	INITIAL RELEASE	DG	5-17



- NOTES:**
1. SEE SMD COUPLER APPLICATION NOTE FOR FURTHER INFORMATION.
  2. PARTS WITH RoHS MATTE TIN FINISH ARE RoHS COMPLIANT.
  3. AVAILABLE IN TAPE AND REEL. SEE SMD COUPLER APPLICATION NOTE FOR FURTHER INFORMATION.

**ELECTRICAL SPECIFICATIONS**

FREQUENCY: 690 - 6000 MHz.  
 INSERTION LOSS: <0.80 dB  
 VSWR: <1.35:1  
 ISOLATION: >16.5dB  
 AMPLITUDE BALANCE: ±0.90dB (±1.1dB 690-715 MHz)  
 PHASE BALANCE: ±6°  
 POWER: 130 WATT  
 TEMPERATURE: -55°C TO 85°C

FINISH	
P/N	TYPE
IPP-7148	TIN/LEAD
IPP-7148RT	RoHS MATTE TIN

PORT CONFIGURATION				
INPUT	J1	J2	J3	J4
J1	---	ISOLATION	-3dB<-90 DEG	-3dB<0 DEG
J2	ISOLATION	---	-3dB<0 DEG	-3dB<-90 DEG
J3	-3dB<-90 DEG	-3dB<0 DEG	---	ISOLATION
J4	-3dB<0 DEG	-3dB<-90 DEG	ISOLATION	---

MATERIAL	DWN S.Cornell	DATE 5-9-16	<b>Innovative</b> <i>Power</i> <b>Products</b>		
FINISH	ENG DG	DATE 5-16			
SEE FINISH CHART		MANUF	DATE	TITLE OUTLINE	
TOLERANCE		CAGE CODE: 437R2		SMD COUPLER, 90°, 690 - 6000 MHz. 130W	
IN [MM]	.XX ±.02 [.50] .XXX ±.010 [.254] ANG. ±1/2°	SHEET OF 1 1	SCALE 2:1	SIZE B	P/N IPP-7148*
					REV. A